



DHA Kinase Polyclonal Antibody

Catalog No	YP-Ab-14730
Isotype	IgG
Reactivity	Human;Mouse;Rat
Applications	WB;IHC;IF;ELISA
Gene Name	DAK
Protein Name	Bifunctional ATP-dependent dihydroxyacetone kinase/FAD-AMP lyase
Immunogen	The antiserum was produced against synthesized peptide derived from human DAK. AA range:91-140
Specificity	DHA Kinase Polyclonal Antibody detects endogenous levels of DHA Kinase protein.
Formulation	Liquid in PBS containing 50% glycerol, 0.5% BSA and 0.02% sodium azide.
Source	Polyclonal, Rabbit,IgG
Purification	The antibody was affinity-purified from rabbit antiserum by affinity-chromatography using epitope-specific immunogen.
Dilution	WB: 1/500 - 1/2000. ELISA: 1/20000.. IF 1:50-200
Concentration	1 mg/ml
Purity	≥90%
Storage Stability	-20°C/1 year
Synonyms	DAK; Bifunctional ATP-dependent dihydroxyacetone kinase/FAD-AMP lyase; cyclizing
Observed Band	59kD
Cell Pathway	nucleus,cytosol,extracellular exosome,
Tissue Specificity	Detected in erythrocytes (at protein level).
Function	catalytic activity:ATP + glycerone = ADP + glycerone phosphate.,catalytic activity:FAD = AMP + riboflavin cyclic-4',5'-phosphate.,cofactor:Magnesium.,cofactor:Manganese or cobalt; for FAD-AMP lyase activity.,enzyme regulation:Each activity is inhibited by the substrate(s) of the other.,function:Catalyzes both the phosphorylation of dihydroxyacetone and the splitting of ribonucleoside diphosphate-X compounds among which FAD is the best substrate.,similarity:Belongs to the dihydroxyacetone kinase (DAK) family.,similarity:Contains 1 DAK1 (dihydroxyacetone kinase subunit 1) domain.,similarity:Contains 1 DAK2 (dihydroxyacetone kinase subunit 2) domain.,subunit:Homodimer.,
Background	This gene is a member of the family of dihydroxyacetone kinases, which have a protein structure distinct from other kinases. The product of this gene phosphorylates dihydroxyacetone, and also catalyzes the formation of riboflavin



4'-phosphate (aka cyclin FMN) from FAD. Several alternatively spliced transcript variants have been identified, but the full-length nature of only one has been determined. [provided by RefSeq, Jul 2008],

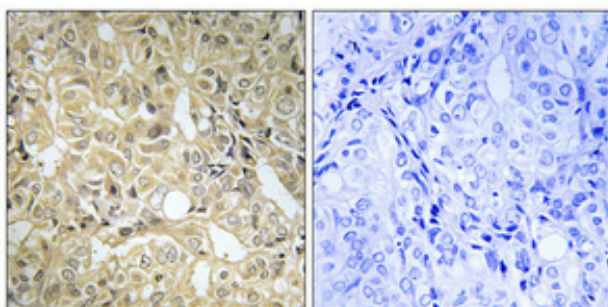
matters needing attention

Avoid repeated freezing and thawing!

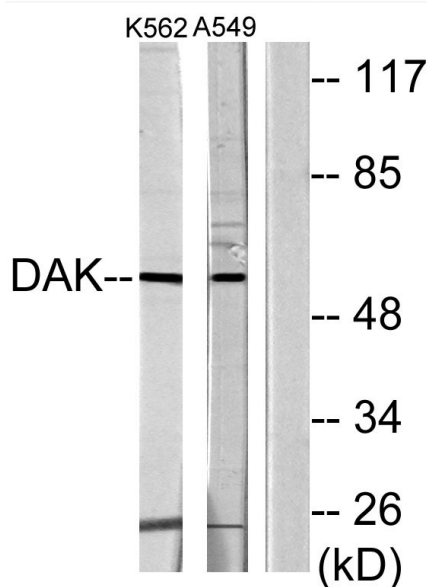
Usage suggestions

This product can be used in immunological reaction related experiments. For more information, please consult technical personnel.

Products Images



Immunohistochemical analysis of paraffin-embedded Human prostate cancer. Antibody was diluted at 1:100(4° overnight). High-pressure and temperature Tris-EDTA, pH8.0 was used for antigen retrieval. Negative control (right) obtained from antibody was pre-absorbed by immunogen peptide.



Western blot analysis of lysates from K562 and A549 cells, using DAK Antibody. The lane on the right is blocked with the synthesized peptide.